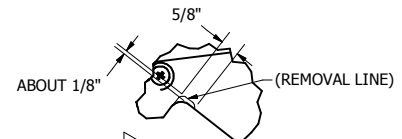
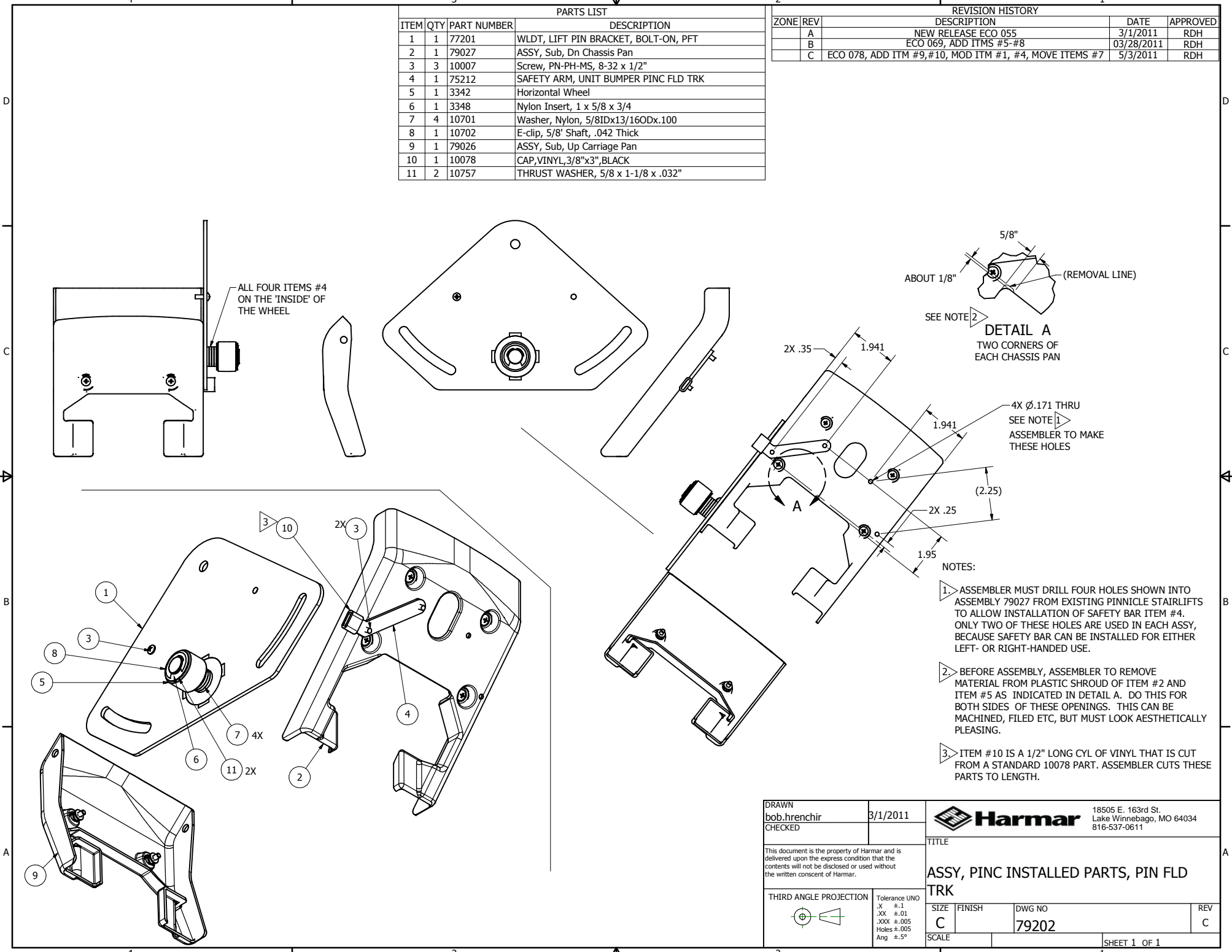


| PARTS LIST | | | | |
|------------|-----|-------------|--------------------------------------|--|
| ITEM | QTY | PART NUMBER | DESCRIPTION | |
| 1 | 1 | 77201 | WLDT, LIFT PIN BRACKET, BOLT-ON, PFT | |
| 2 | 1 | 79027 | ASSY, Sub, Dn Chassis Pan | |
| 3 | 3 | 10007 | Screw, PN-PH-MS, 8-32 x 1/2" | |
| 4 | 1 | 75212 | SAFETY ARM, UNIT BUMPER PINC FLD TRK | |
| 5 | 1 | 3342 | Horizontal Wheel | |
| 6 | 1 | 3348 | Nylon Insert, 1 x 5/8 x 3/4 | |
| 7 | 4 | 10701 | Washer, Nylon, 5/8IDx13/16ODx.100 | |
| 8 | 1 | 10702 | E-clip, 5/8" Shaft, .042 Thick | |
| 9 | 1 | 79026 | ASSY, Sub, Up Carriage Pan | |
| 10 | 1 | 10078 | CAP, VINYL, 3/8"x3", BLACK | |
| 11 | 2 | 10757 | THRUST WASHER, 5/8 x 1-1/8 x .032" | |

| REVISION HISTORY | | | | |
|------------------|-----|--|------------|----------|
| ZONE | REV | DESCRIPTION | DATE | APPROVED |
| | A | NEW RELEASE ECO 055 | 3/1/2011 | RDH |
| | B | ECO 069, ADD ITMS #5-#8 | 03/28/2011 | RDH |
| | C | ECO 078, ADD ITM #9,#10, MOD ITM #1, #4, MOVE ITEMS #7 | 5/3/2011 | RDH |



SEE NOTE 2
DETAIL A
 TWO CORNERS OF EACH CHASSIS PAN

4X Ø.171 THRU
 SEE NOTE 1
 ASSEMBLER TO MAKE THESE HOLES

- NOTES:
- ASSEMBLER MUST DRILL FOUR HOLES SHOWN INTO ASSEMBLY 79027 FROM EXISTING PINNACLE STAIRLIFTS TO ALLOW INSTALLATION OF SAFETY BAR ITEM #4. ONLY TWO OF THESE HOLES ARE USED IN EACH ASSY, BECAUSE SAFETY BAR CAN BE INSTALLED FOR EITHER LEFT- OR RIGHT-HANDED USE.
 - BEFORE ASSEMBLY, ASSEMBLER TO REMOVE MATERIAL FROM PLASTIC SHROUD OF ITEM #2 AND ITEM #5 AS INDICATED IN DETAIL A. DO THIS FOR BOTH SIDES OF THESE OPENINGS. THIS CAN BE MACHINED, FILED ETC, BUT MUST LOOK AESTHETICALLY PLEASING.
 - ITEM #10 IS A 1/2" LONG CYL OF VINYL THAT IS CUT FROM A STANDARD 10078 PART. ASSEMBLER CUTS THESE PARTS TO LENGTH.

| | | | | | |
|--|--|-----------|--------|--|----------|
| DRAWN bob.hrenchir | | 3/1/2011 | | 18505 E. 163rd St. Lake Winnebago, MO 64034 816-537-0611 | |
| CHECKED | | | | | |
| This document is the property of Harmar and is delivered upon the express condition that the contents will not be disclosed or used without the written consent of Harmar. | | | | TITLE | |
| THIRD ANGLE PROJECTION | | | | ASSY, PINC INSTALLED PARTS, PIN FLD TRK | |
| Tolerance UNO X ±.1 .XX ±.01 .XXX ±.005 Holes ±.005 Ang ±.5° | | SIZE C | FINISH | DWG NO 79202 | REV C |
| SCALE | | | | SHEET 1 OF 1 | |